

Name

Class



www.MathsTeacherHub.com

# Types of graph

(9 – 1) Topic booklet

## Foundation

These questions have been collated from previous years GCSE Mathematics papers.

**You must have:** Ruler graduated in centimetres and millimetres, protractor, pair of compasses, pen, HB pencil, eraser.

Total Marks

### Instructions

- Use **black** ink or ball-point pen.
- **Fill in the boxes** at the top of this page with your name, centre number and candidate number.
- Answer **all** questions.
- Answer the questions in the spaces provided  
– *there may be more space than you need.*
- Diagrams are NOT accurately drawn, unless otherwise indicated.
- You must **show all your working out.**
- If the question is a **1F** question you are not allowed to use a calculator.
- If the question is a **2F** or a **3F** question, you may use a calculator to help you answer.

### Information

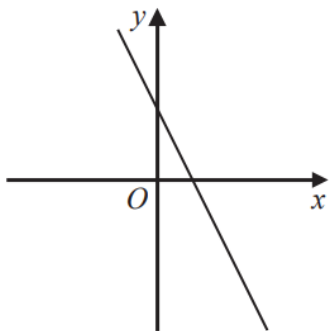
- The marks for **each** question are shown in brackets  
– *use this as a guide as to how much time to spend on each question.*

### Advice

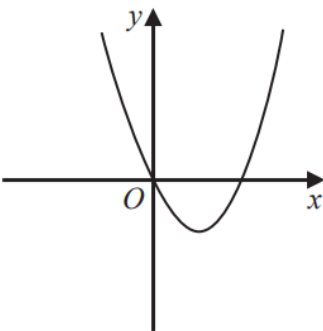
- Read each question carefully before you start to answer it.
- Keep an eye on the time.
- Try to answer every question.
- Check your answers if you have time at the end.

**Answer ALL questions**  
**Write your answers in the space provided.**  
**You must write down all the stages in your working.**

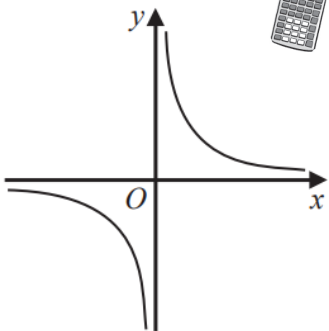
28 Here are five graphs.



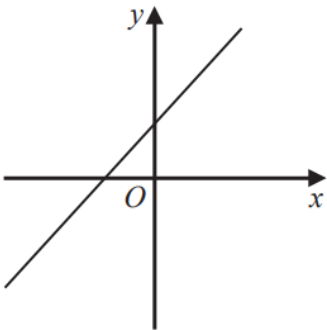
**A**



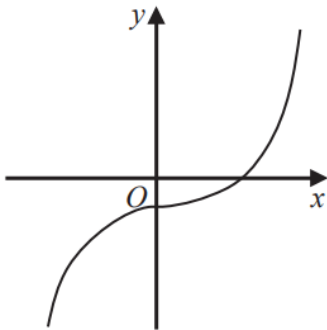
**B**



**C**



**D**



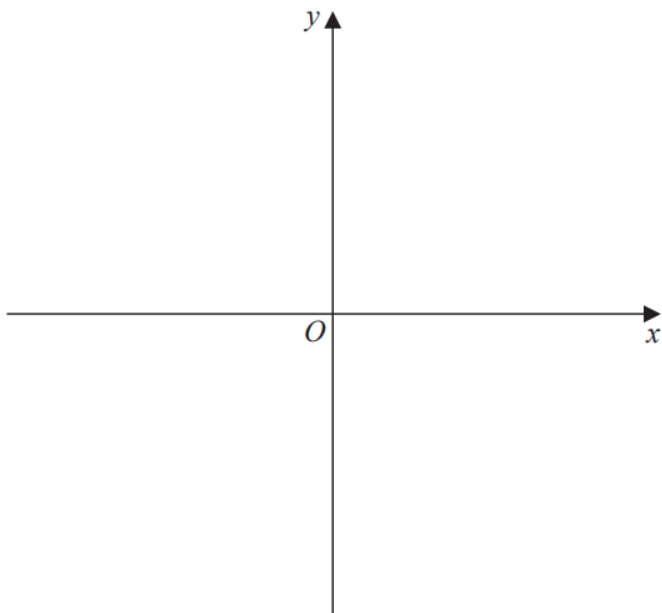
**E**

The table shows the equations of these graphs.

Equation	Graph
$y = x^2 - 4x$	
$y = x + 3$	
$y = x^3 - 2$	
$y = \frac{1}{x}$	
$y = 5 - 2x$	

Match the letter of each graph with its equation.

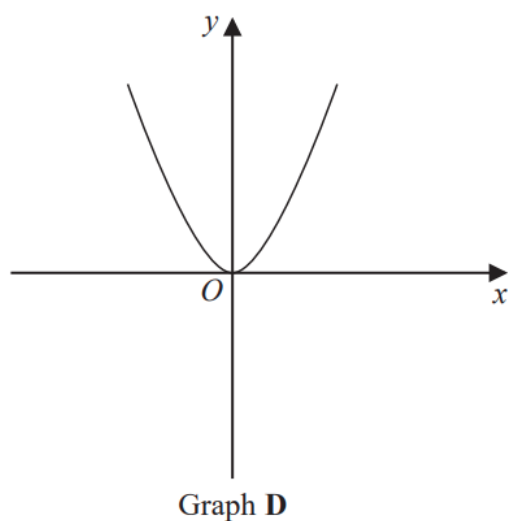
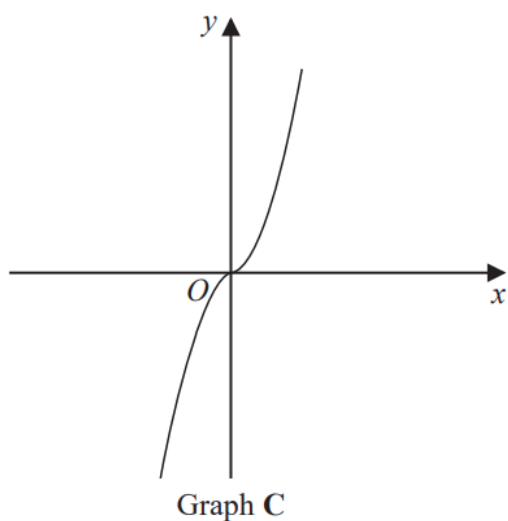
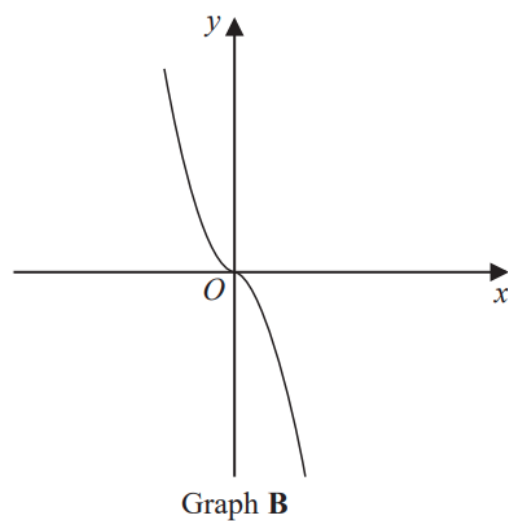
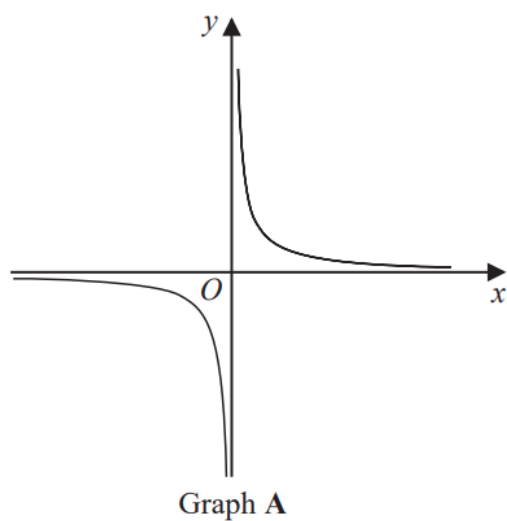
**28** Sketch the graph of  $y = \frac{1}{x}$



November 2021 – Paper 3F

**(Total for Question 28 is 2 marks)**

22 The diagram shows four graphs.

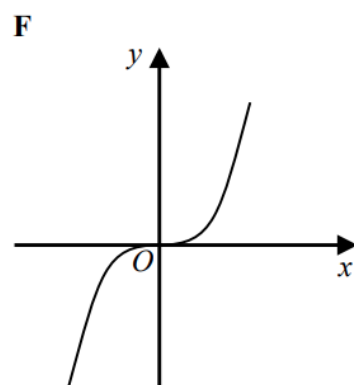
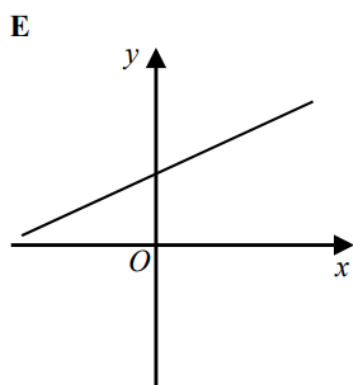
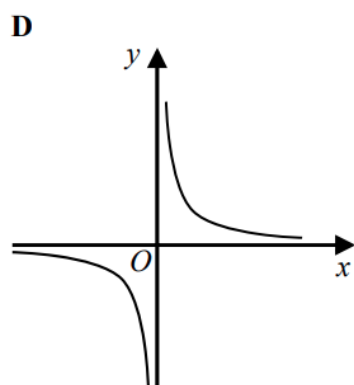
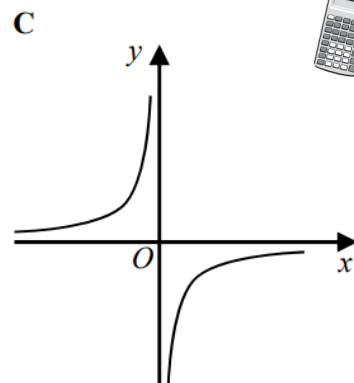
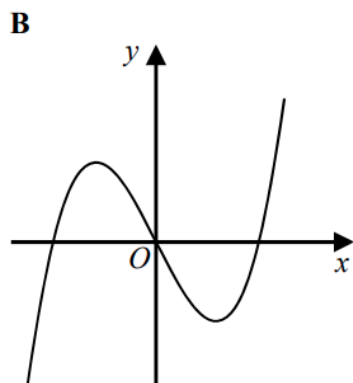
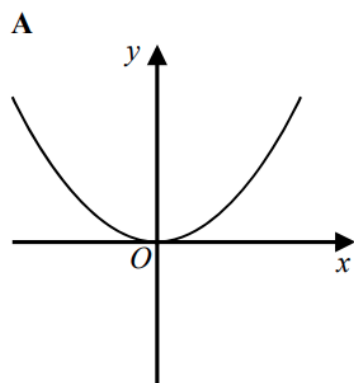


Each of the equations in the table is the equation of one of the graphs.

Complete the table.

Equation	Letter of graph
$y = -x^3$	
$y = x^3$	
$y = x^2$	
$y = \frac{1}{x}$	

25 Here are six graphs.



Write down the letter of the graph that could have the equation

(a)  $y = x^3$

.....  
(1)

(b)  $y = \frac{1}{x}$

.....  
(1)